

Girl morphing into a devil

In this tutorial we'll morph a model's face into a devil face. We'll use simple tweening animation technique in photoshop to morph the face.



Start by opening a close up of girl's face.

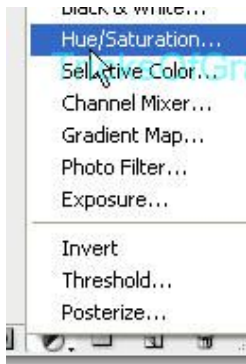


Create duplicate of the layer. We will use the original image later on while animating.

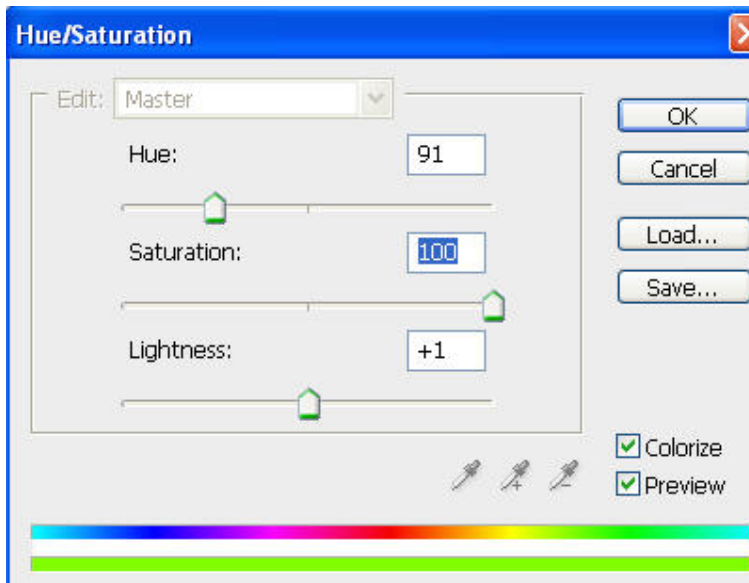
Select her hair using polygon lasso tool.



From bottom of the layer palette select new adjustment layer and select hue / saturation.



Apply settings as shown below. This will change the hair to some weird color. You can use a shade of your own choice too.





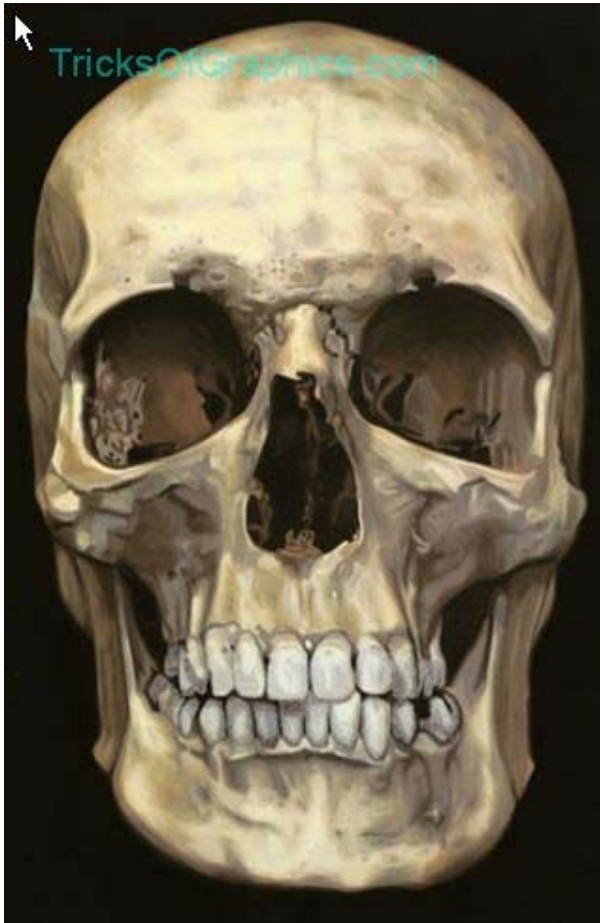
Select the neck area again by using polygon lasso tool.



Apply settings as shown below.



Open an image of a skull. Knock out the background color using magic wand tool.



From filter menu select liquify. Choose forward warp tool and apply as shown. Use the brush settings shown below.



From layer palette change layer mode to multiply.



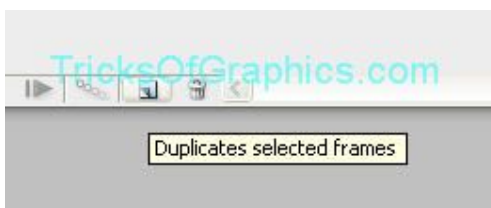


The devil face is done. Now we will animate / morph it.

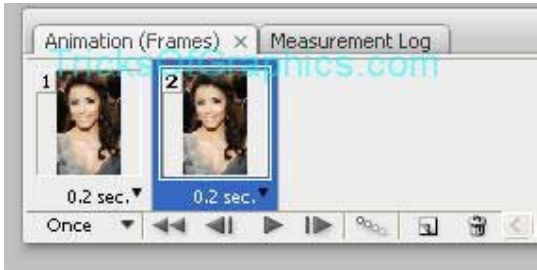
Select all the layer except the original face layer and press Ctrl + G to group it. Hide the group. Open animation window. The default first frame will show the girl with original face.



From bottom of the animation palette select "Duplicate selected frames"



A new fram will be created.



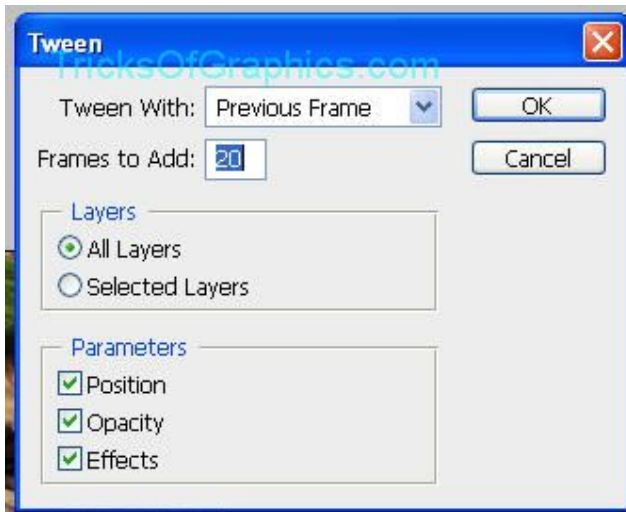
For this new frame switch on the visibilty of the group layer from the layer palette.



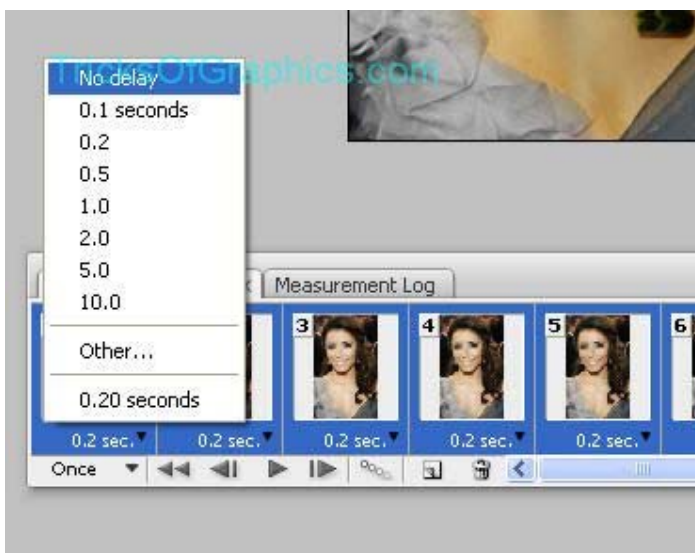
From bottom of the animation palette select "Tweens Animation Frames"



Apply settings as shown below.



This will create 20 frames between the two states. Select all frames. right click and set delay to No Delay.



Set looping to forever.



Here's the output. Scarry huh!

